



Bees



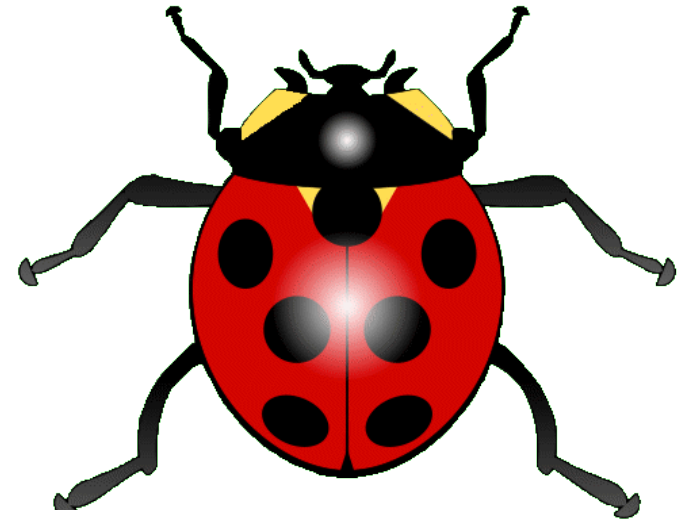
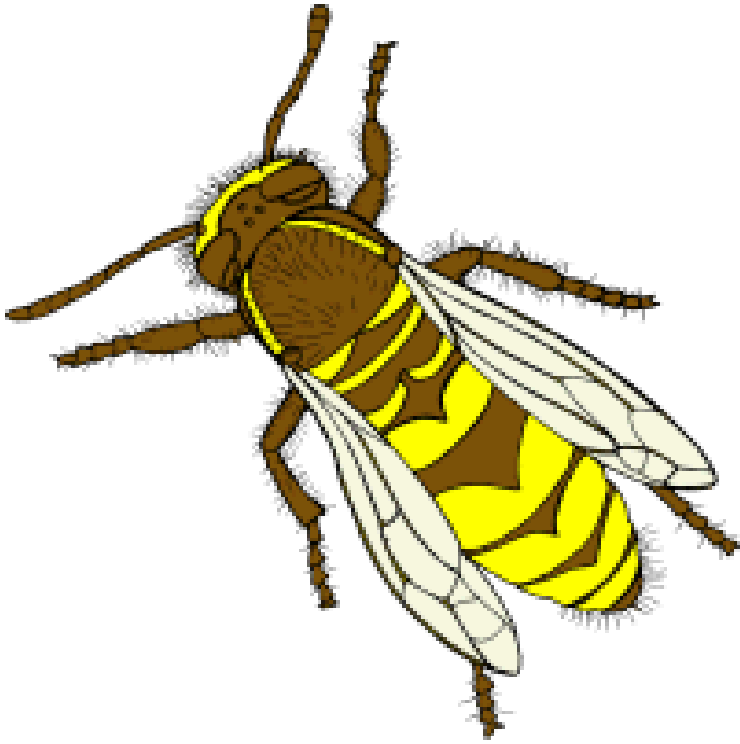
Social Bees vs. Solitary Bees

Over 20,000 kinds of bees



- There are 4,000 bee species in the United States
- There are 600 bee species in WA
- There are 18 species of bumble bees in SE Washington

Bees Are Insects

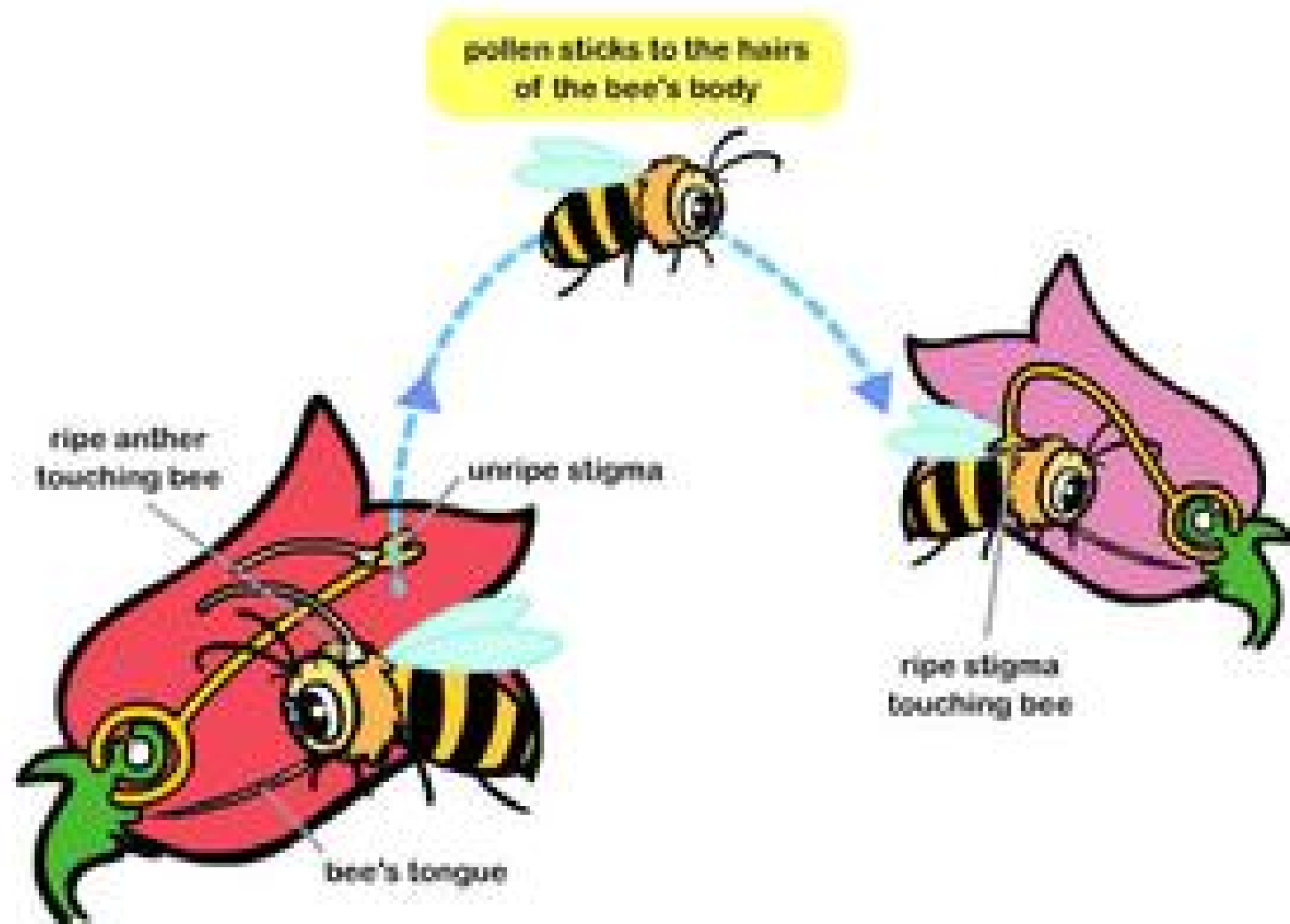


Social Bees



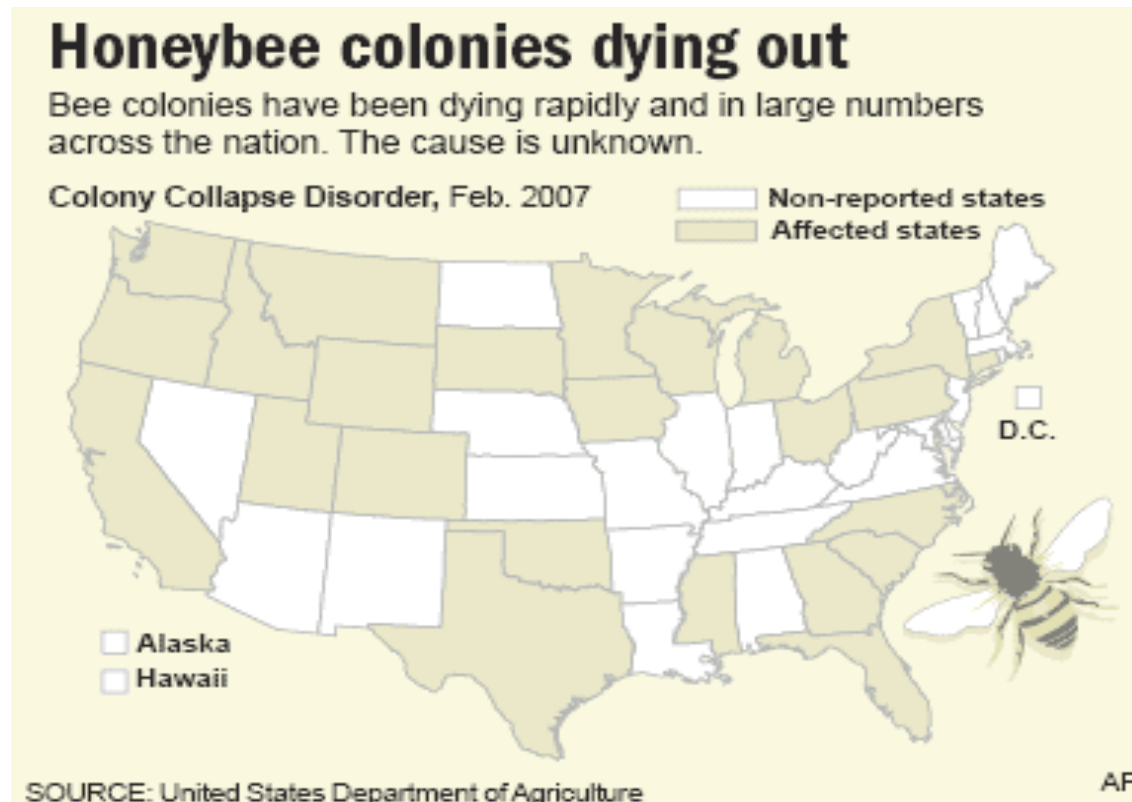
Solitary Bees – 80%





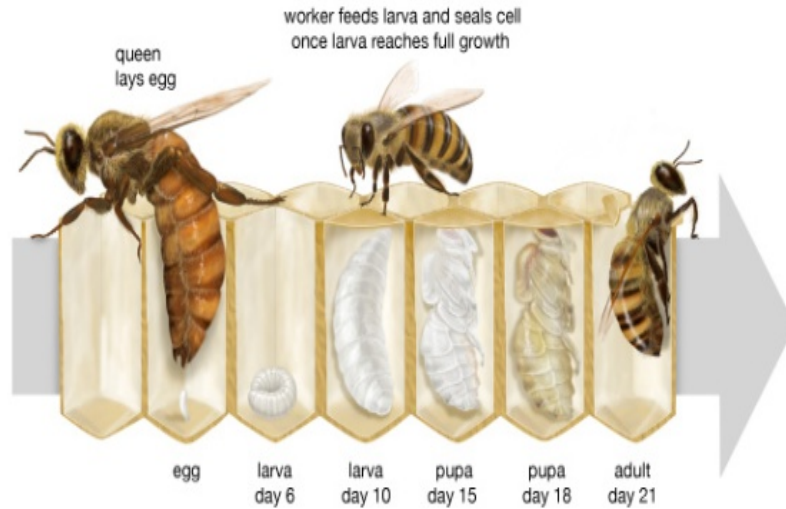
Help the bees!

- We depend on Bees to pollinate -



Honey Bees – social or solitary?

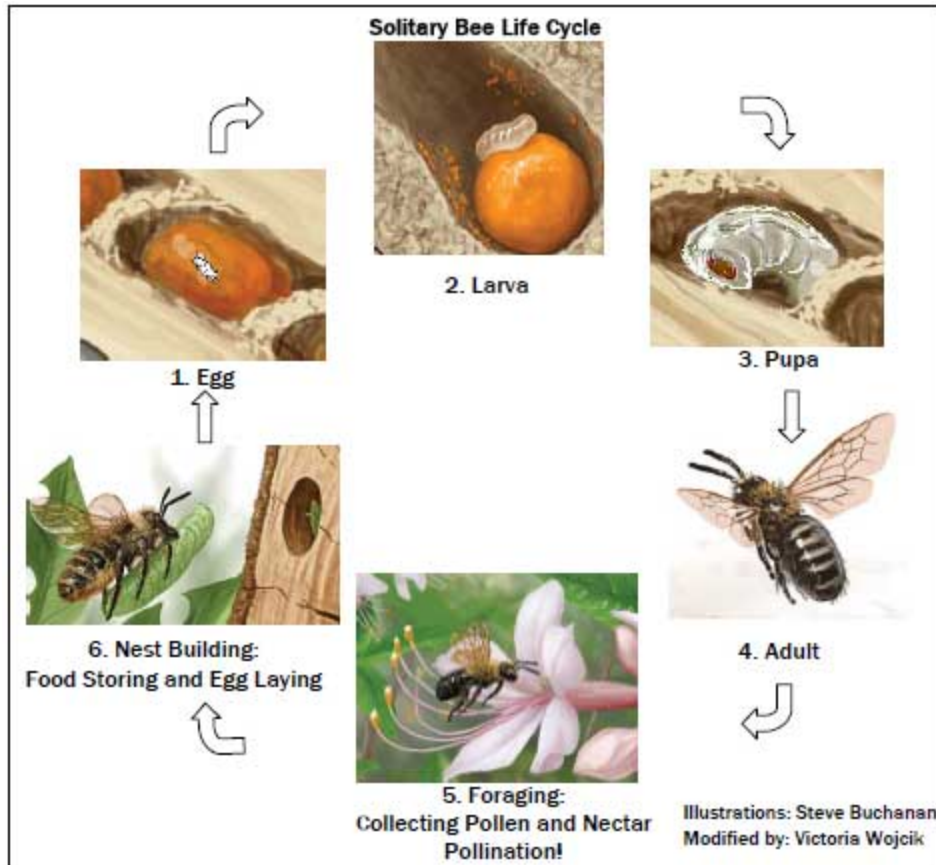
Life cycle of honeybees



© 2013 Encyclopædia Britannica, Inc.



Mason Bee – Social or Solitary?



Social Bee – Honey Bee	Solitary Bee – Mason, Leaf cutter, Sweat Bees
One queen – one hive. Worker bees defend the hive, the queen and the young	Every female is the queen; no hive
Hive communicates and every bee has a specific task:	No communications since no one works for the female. She does all chores herself.
More aggressive and protective of the hive	Gentle
More potent sting with stronger reaction	Rarely stings unless being squished, then the sting is like a mosquito bite
Make honey	None available for harvest
Effective pollinator. One bee gathers pollen and another gathers nectar	Efficient pollinator. Pollen and nectar are gathered in the same visit
Pollen becomes sticky and is combed into pollen sacs for carrying to the hive	Dry pollen clings to hairy body and drops off to pollinate almost every flower visited

- What are the advantages of being a solitary bee? What are the advantages of being social bee?
- Why would honey bees rather live in a colony?
- Why are bees important to us?
- Are there ideas about how to help solve the problem of decreased bee populations?
- How can we support the solitary bees in our garden? What do they need to live? (habitat)

How can we help Mason Bee?

